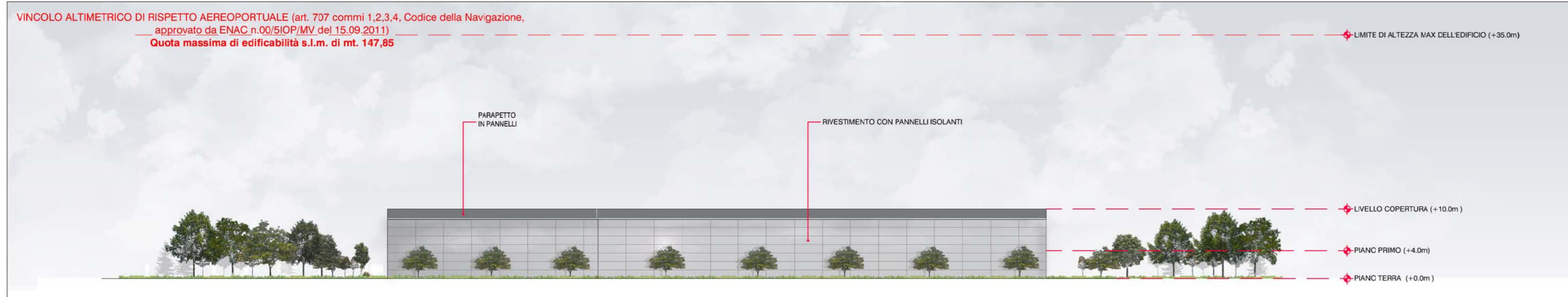
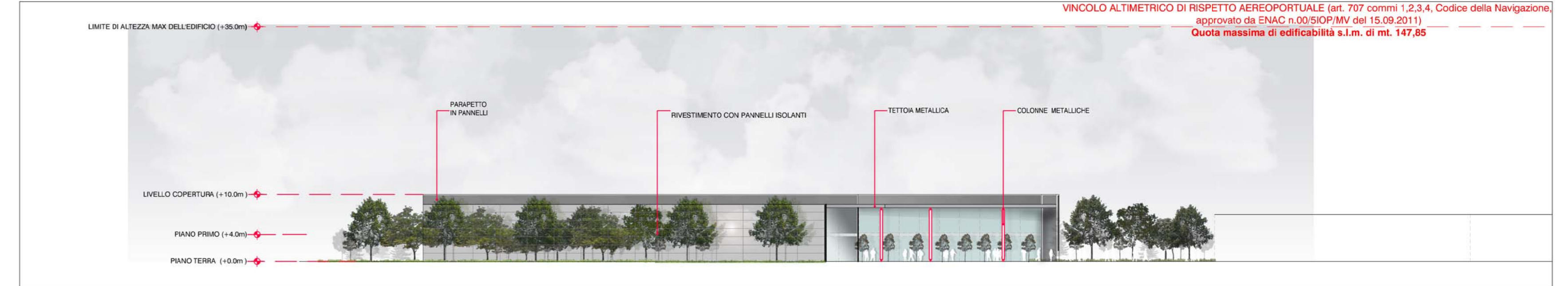


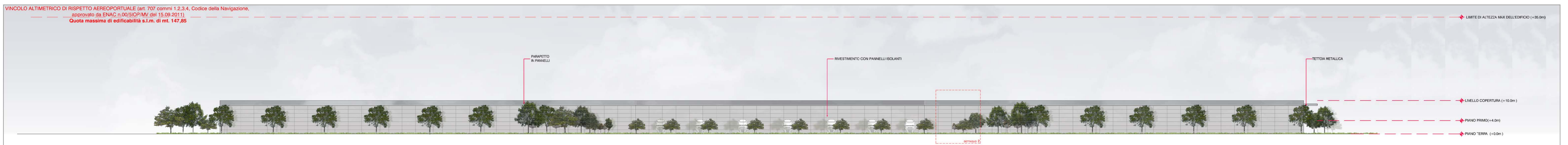
1- PROSPETTO SUD "MAIN RETAIL" (SCALA 1:500)



2- PROSPETTO EST "MAIN RETAIL" (SCALA 1:500)



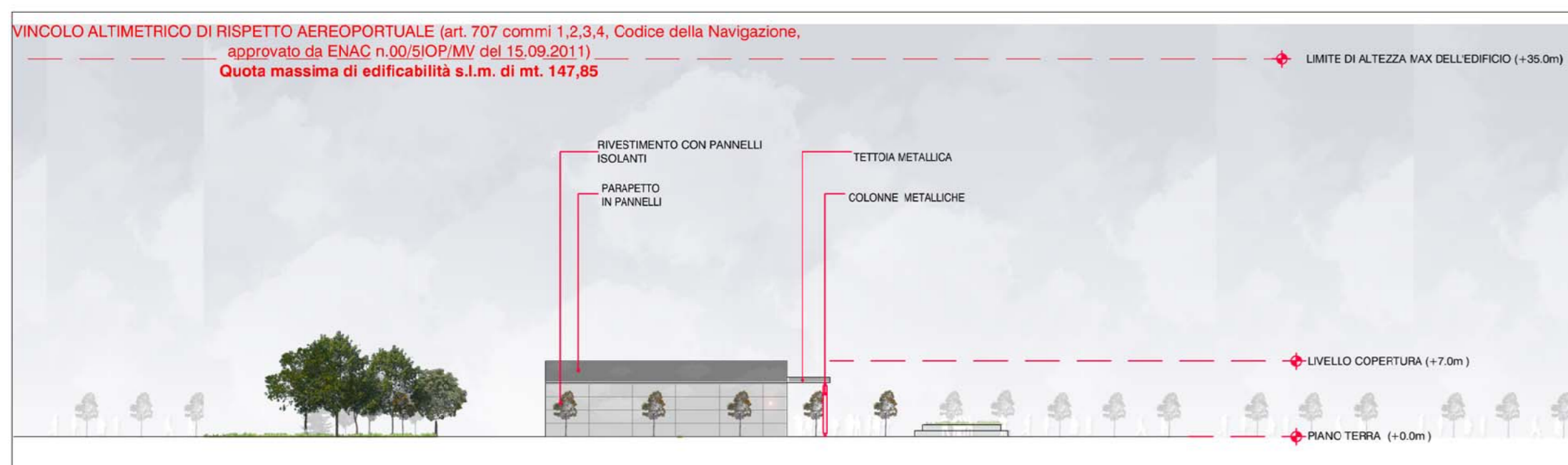
3- PROSPETTO OVEST "MAIN RETAIL" (SCALA 1:500)



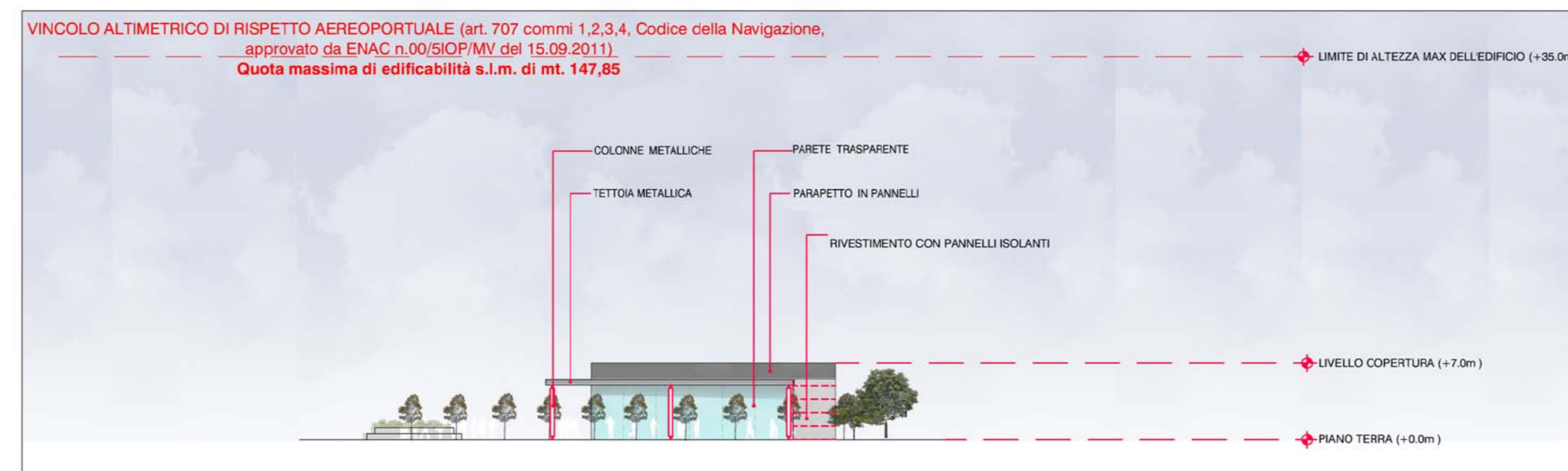
4- PROSPETTO NORD "MAIN RETAIL" (SCALA 1:500)



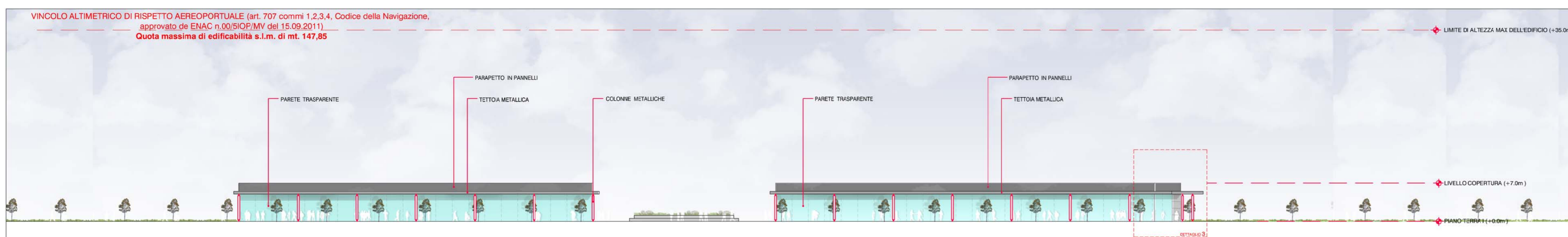
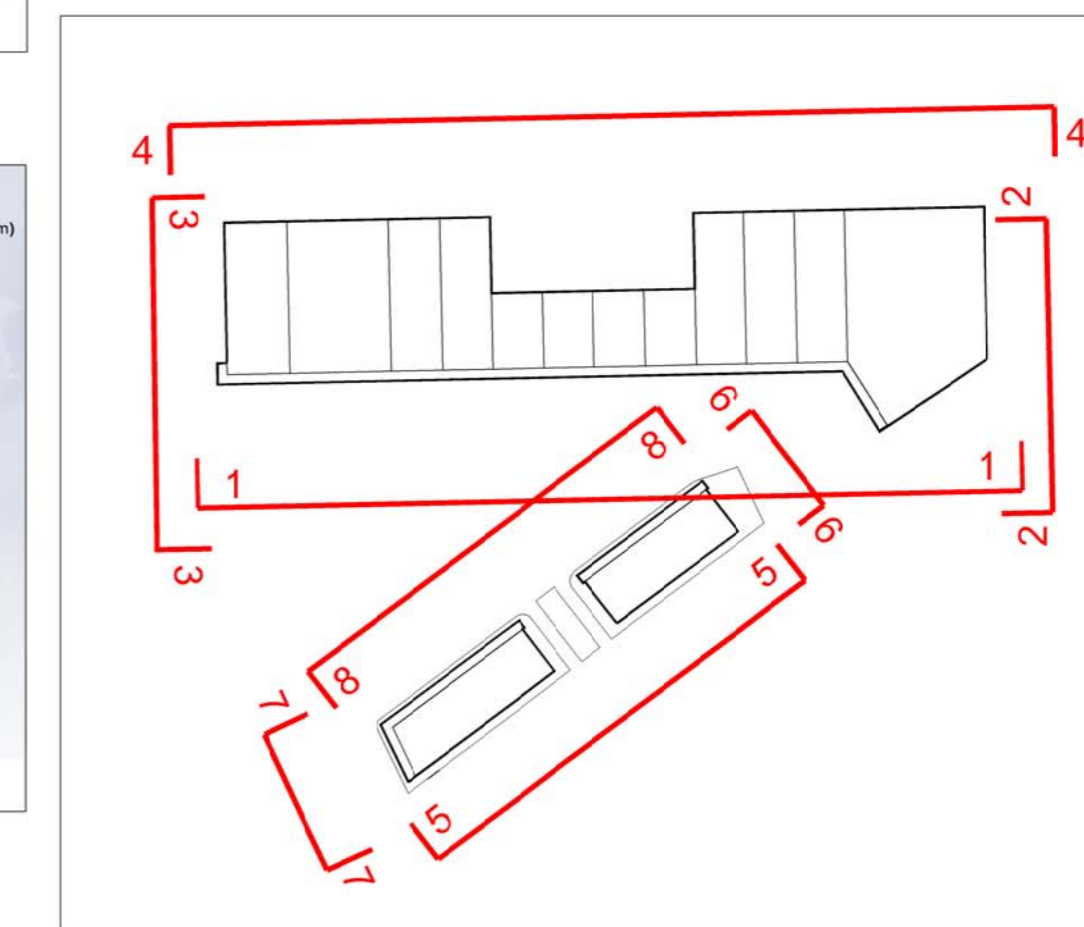
5- PROSPETTO SUD "SMALL RETAIL" (SCALA 1:500)



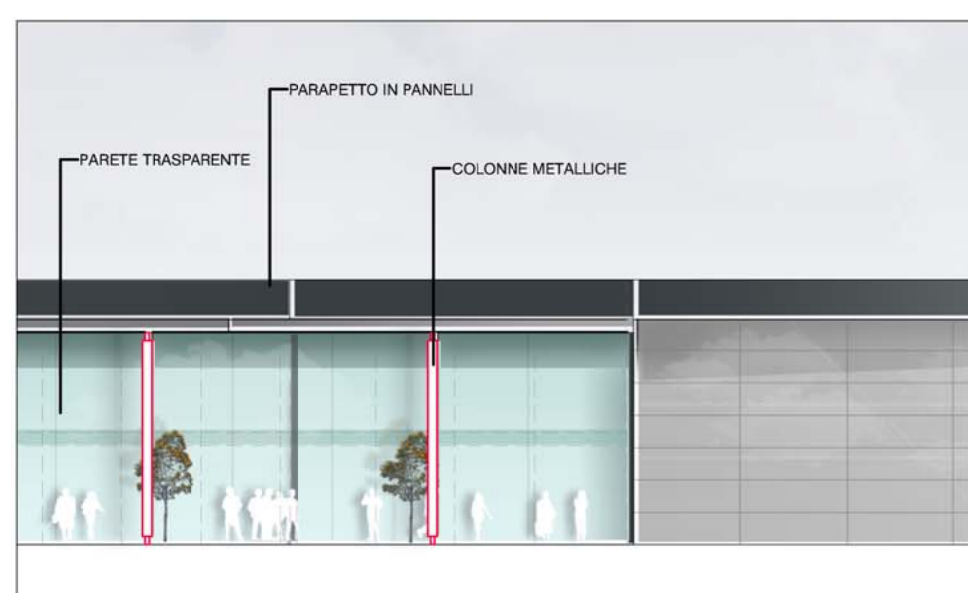
6- PROSPETTO EST "SMALL RETAIL" (SCALA 1:500)



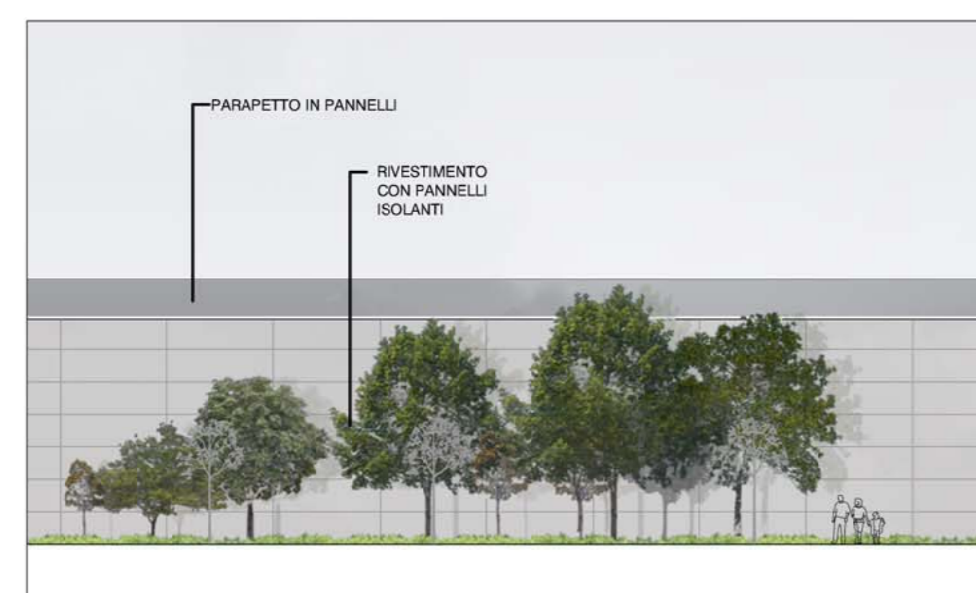
7- PROSPETTO OVEST "SMALL RETAIL" (SCALA 1:500)



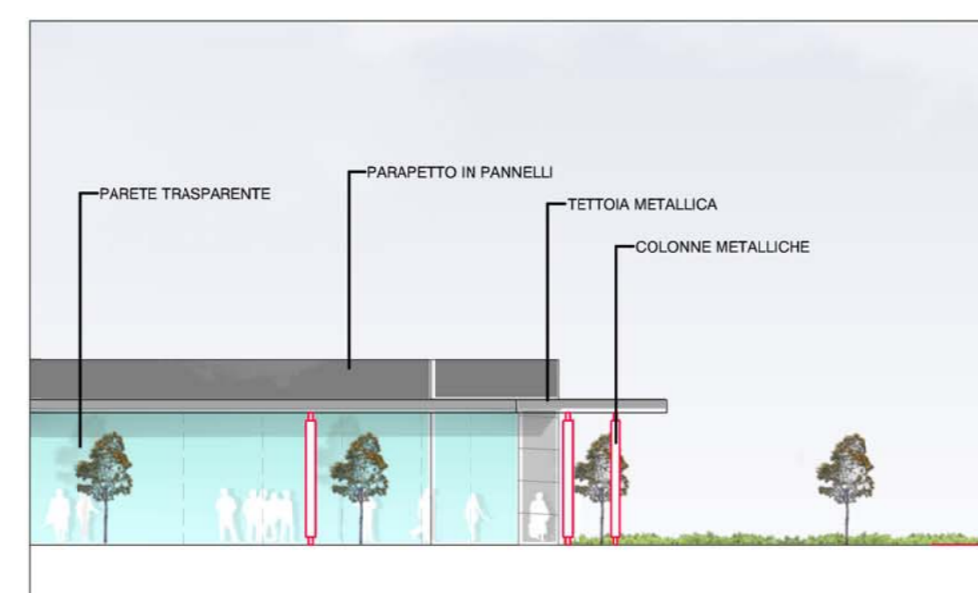
8- PROSPETTO NORD "SMALL RETAIL" (SCALA 1:500)



DETTAGLIO 1 PROSPETTO SUD "MAIN RETAIL"



DETTAGLIO 2 PROSPETTO NORD "MAIN RETAIL"



DETTAGLIO 3 PROSPETTO NORD "SMALL RETAIL"

**Westfield**

WESTFIELD MILAN S.p.a.  
C.so Giacomo Matteotti, 10  
20121 Milano

ACCORDO DI PROGRAMMA  
(APPROVATO CON D.P.G.R. DEL 22.05.2009 N.5095)  
PRIMO ATTO INTEGRATIVO  
(APPROVATO CON D.P.G.R. DEL 29.03.2010 N.3148)

**COMUNE DI SEGRATE**

VARIANTE PROGRAMMA ATTUATIVO AMBITO 3

Titolo elaborato: **PROSPETTI RETAIL PARK E DETTAGLI** All.to n. **A\_07.1**

Revisori: \_\_\_\_\_ Controllato: \_\_\_\_\_ Approvato: \_\_\_\_\_ Data: **Gennaio 2014** 1:500/1:200  
Agg.to: **Marzo 2015** Scala: \_\_\_\_\_

Concept Design: **leonard design architects** Consulenze: **esacchi**, **MPN UK LIMITED**  
Il Progettista: **esacchi**, **Norman Disney & Young**

Visto: **WESTFIELD MILAN S.p.a.**  
C.so Giacomo Matteotti, 10  
20121 Milano